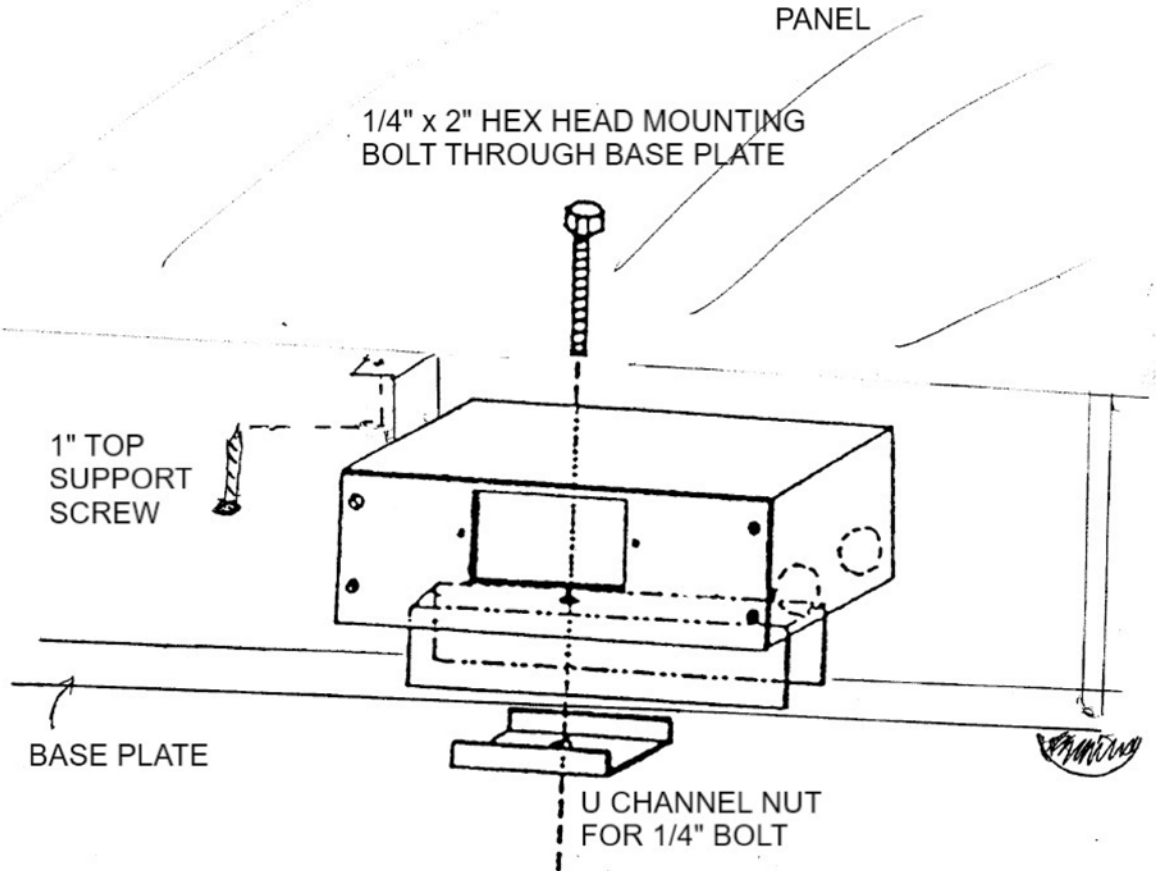


AO 2 TYPICAL INSTALLATION

Standard base only



■ 3691 N. Elston Ave.
Chicago IL
60618
(773) 463-0440
FAX (773) 463-7202



REQUIRED MATERIALS FOR ACTION OFFICE TWO/ENCORE® SYSTEM

(See Components List)

Standard Base

1. One Double Base Box (L-202) for 4 outlets total side-by-side base (National base only), or one regular Base Box (L-201) box for 2 outlets total back-to-back (Chicago base only). Exception: All boxes can accommodate back-to-back receptacles.
2. A Baseline Receptacle for each baseline outlet location.
3. A Special Order Vertical Panel Box (E-502) where desired. This box accommodates two duplex outlets and two data openings. On back-to-back installations, one box is required for each side.
4. Receptacles for the Vertical Panel Box can be ordered with the color designation and the "V" suffix. (ie. J-401 BK V, J-406 GY V, etc.)
5. One Special Order Power Raceway Feeder Kit (E-503) to feed Vertical Panel Boxes. One kit will feed two boxes on back-to-back installations.

Narrow Base

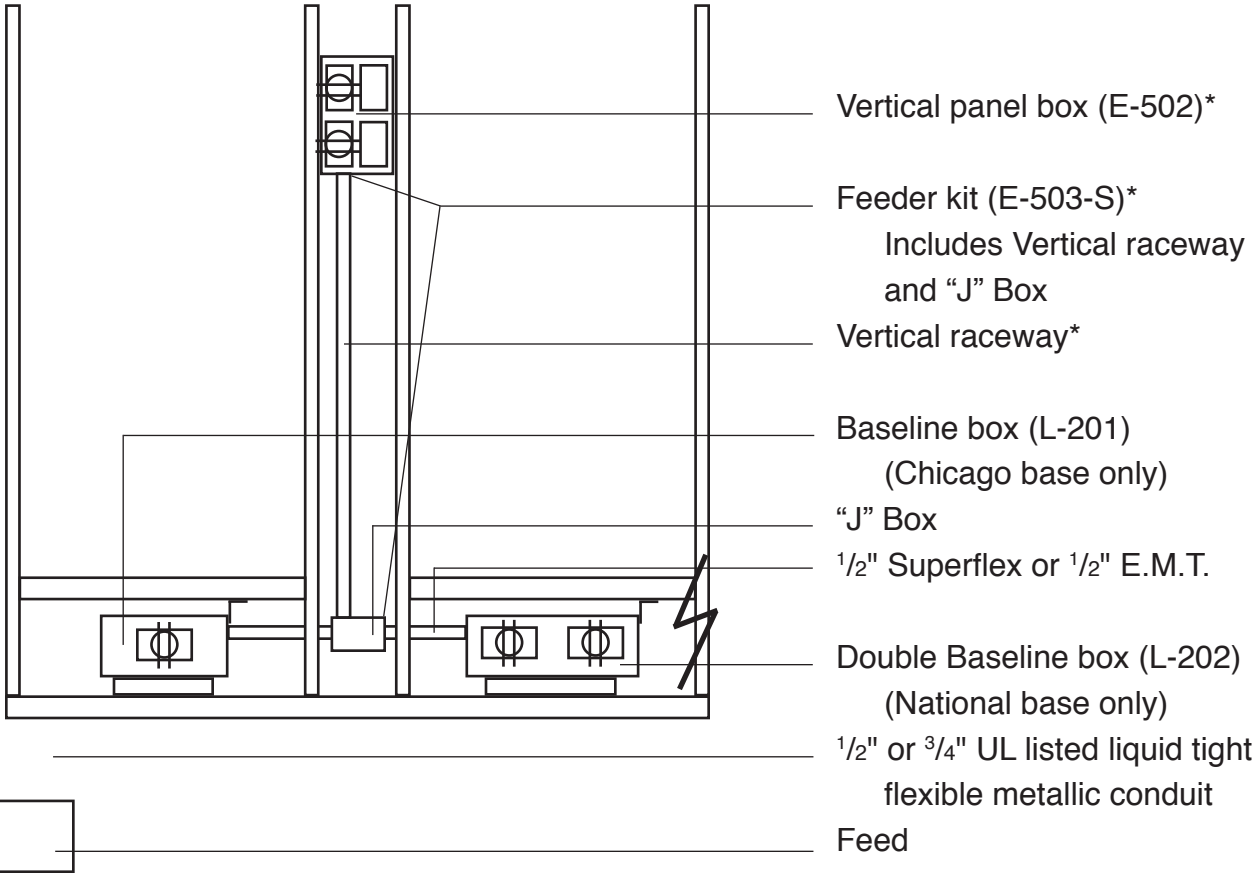
1. One Double Base Box (L-204) for 2 outlets maximum. Either side-by-side base or 2 on opposite sides back-to-back. 4 outlets on one panel, 2 on each side, requires 2 L-204.
2. A decorator style receptacle for each baseline outlet location.

NOTES:

- A. The entire system can be interconnected with 1/2" extra flexible conduit or 1/2" E.M.T. (See Diagram)
- B. Recommended wiring is T.H.H.N. stranded.
- C. Conduit is held in place with K16 Caddy Clips.
- D. Each Base Box bolts to existing holes in the base of the frames of 24" and 30" panels. Larger panels require that a 1/4" minimum hole be drilled at each box location.
- E. Each Special Order Vertical Panel Box is anchored using existing holes and one 3/16" x 3/4" RHMS and nut when installed at standard height. (Standard is 31 1/2" from floor to bottom of box.) Installation at any other height requires drilling a new mounting hole.
- F. Each Special Order Power Raceway Feeder Kit is anchored using a one hole strap and box clip.
- G. Box areas are as follow:
 - a. L-201 Base box 54 c.i.
 - b. L-202 Base box 90 c.i.
 - c. E-502 Vertical Panel Box (power section only) 30 c.i.
 - d. E-503-S Raceway 100% area .2244". (At 40% fill, seven #12 T.H.H.N. max.)
 - e. E-503-S "J" box 15 c.i.
- H. Data capacity is thirtytwo 4 pair cables.
- J. Many styles of communications outlets are available for all types of data and phone receptacles to fit Vertical Panel Boxes.

For additional product information, please contact **En-tal Industries** at (773) 463-0440.
Check with local codes prior to installation.

INSTALLATION DIAGRAM
FOR BASELINE AND VERTICAL PANEL INSTALLATION
 (For hard wiring Herman Miller Action Office Two/Encore® Furniture)



*E-502 and E-503 are available by special order only.

Typical Baseline and Vertical Panel Installation

COMPONENTS FOR BASELINE INSTALLATION
(For hard wiring Herman Miller Action Office Two/Encore® Furniture)
Narrow Base

ILLUSTRATION

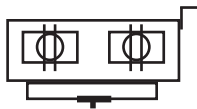
PART#

DESCRIPTION



L-201

Base Box (Shown with sides, bracket, bolt, and u-channel. All are included.) This box is recommended for panels ordered with the "R" suffix (Chicago base).



L-202

Double Base Box (Shown with sides, bracket, bolt, and u-channel. All are included.) This box to be installed only in standard pre-punched base covers with 2 openings near the center (National base). See Note * below.

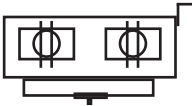
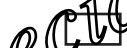


L-109

Blank (Required on all Base Box openings without outlets.



Note * : Chicago task light cords (6' in length) will not reach the base receptacle on any panel in excess of 36" wide with this type of installation.

COMPONENTS FOR BASELINE INSTALLATION
 (For hard wiring Herman Miller Action Office Two/Encore® Furniture)
 Narrow Base

ILLUSTRATION	PART#	DESCRIPTION
	L-204	Double Base Box (Shown with sides, bracket, bolt, and u-channel. All are included.)
	L-109	Blank (Required on all Base Box openings without outlets.)

Special Order Only
 (E-204)

COMPONENTS FOR VERTICAL PANEL POWER/DATA INSTALLATION
 (For hard wiring Herman Miller Action Office Two® Furniture)
 See previous page for Baseline components

ILLUSTRATION	PART#	DESCRIPTION
	E-502	Vertical Panel Box Mounting hardware and raceway fillers included. Standard finish is semi-gloss black, custom colors available as special order at additional cost (See *NOTE at front of Receptacle List before ordering receptacles and data openings)
	E-503-S	Power Raceway Feeder Kit Raceway with "J" box assembly and mounting hardware included. Allows for standard height of 31 1/2" to bottom of E-502 box. (Special heights available upon request)

Special Order Only
 (E-502 and E-503)