

## CANVAS WALL furniture electrical parts BY EN-TAL Industries Notes



Do not use the A-172S and the A-172D on the same bracket.  
(the knock outs do not line up)



“Belt height” Each EN-TAL A-174 belt bracket needs one HMI FT157- Hard Wired Mounting kit. The term “belt height” is used for any elevation above the base.

The term “receptacle” is used for a duplex receptacle (one receptacle gives you two places to plug in)

Receptacles for both base and belt height installations are Decorator style receptacles. Receptacles are typically provided by the electricians, but can be ordered from EN-TAL. EN-TAL recommends Pass and Seymore/Legrand due to the increasing size/design of a different brand.



Flex wire and all other materials are provided by the electrician.  
These additional materials not provided by EN-TAL or HMI should be “off the shelf” items that are locally available.

If the customer requests USB receptacles please contact EN-TAL for additional information. USB receptacles are large and can not be installed in the A-172S box or back to back.



An in-feed box A-172SF and A-172DF are used to provide a clean entrance into the base of the furniture.(left). If there are no base covers the “off the shelf” 4” box may be used for the in-feed. (right)



## CANVAS WALL BASE HEIGHT INSTALLATION

1. Mount 1 or 2 boxes to the bracket using 10-32 X 3/16" box mounting screws (Align as necessary.) If two are used insert box to box connector. (fig1)



(fig 1 A-172S single sided shown)



(fig 2 A-172D back to back shown)

2. If using back to back A-172D mount box so removable cover is facing to the open side of the bracket. (fig 2) this avoids the cover interfering with the bracket.
3. Mount A-170 bracket to frame using two #10 X 3/4" SMS.(red arrows)
4. Use #8X 1/2" drill point screws to ensure the bracket does not have any additional movement. (blue arrows)



5. Connect boxes and wire according to applicable local electrical codes.
6. Base feeds may be installed as shown.
7. Install receptacles and install base covers.

## CANVAS WALL BELT HEIGHT INSTALLATION

1. Mount 1 or 2 boxes to the bracket using 10-32 X 3/16" box mounting screws (Align as necessary.) If two are used insert box to box connector.



2. Mount A-174 bracket to FT-157 bracket using four #8 X 1/2" SMS.
3. Snap FT-157 bracket into proper location.



4. Connect boxes and wire according to applicable local electrical codes.
5. Install receptacles.
6. Install tiles.

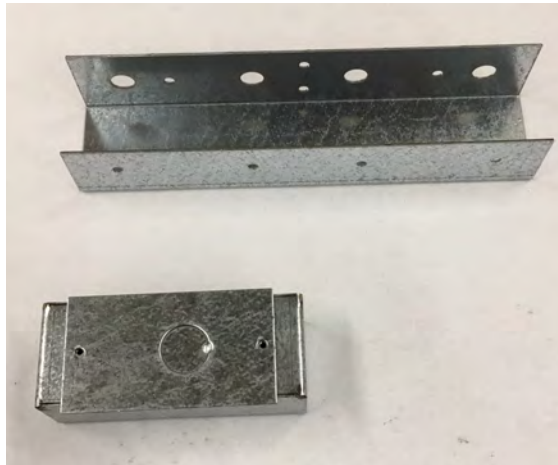
## Base and Belt Openings



CANVAS WALL furniture electrical parts by EN-TAL Industries.  
**TYPICAL “A” feed for single sided (typically base only)**



Plan view in feed box single sided



In feed at base height order one A-170 base bracket.

Order one A-172SF single sided Canvas feed box \*

\* If there are full base covers on both sides typical E may be substituted.

CANVAS WALL furniture electrical parts by EN-TAL Industries.  
**TYPICAL “B” feed with receptacle for single sided (typically base only)**



Plan view in feed box single sided



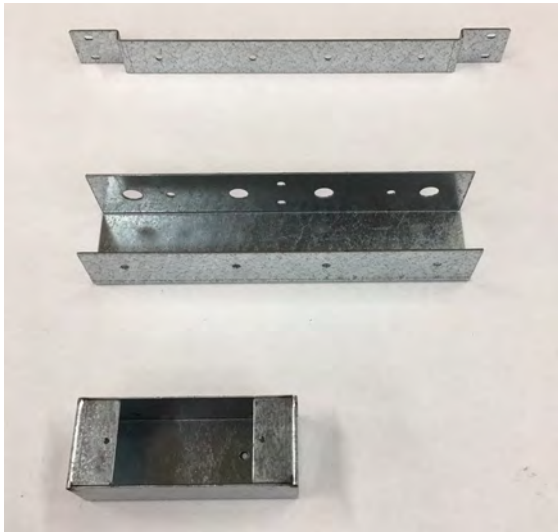
In feed at base height order one A-170 base bracket.

Order one A-172SF single sided Canvas feed box, one A-172S single sided Canvas box and one 1191-DC

CANVAS WALL furniture electrical parts by EN-TAL Industries.  
**TYPICAL “C” (base) or TYPICAL “C” (belt) single receptacle**



Plan view one duplex receptacle single sided



If installing power at belt height order one A-174 belt bracket.

**OR**

If installing power at base height order one A-170 base bracket.

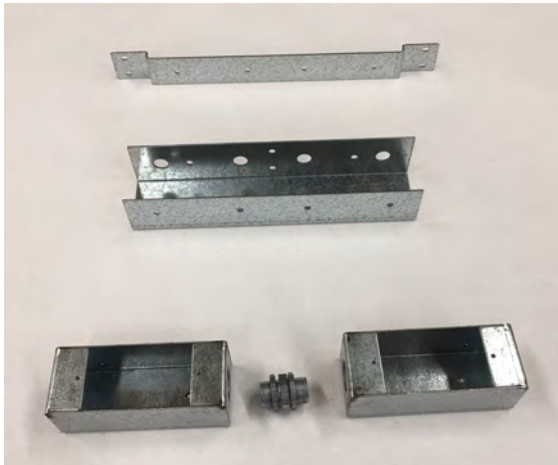
Order one A-172S single sided Canvas box.



CANVAS WALL furniture electrical parts by EN-TAL Industries.  
**TYPICAL “D” (base) or TYPICAL “D” (belt) two receptacles**



Plan view two duplex receptacles single sided



If installing power at belt height order one A-174 belt bracket.

**OR**

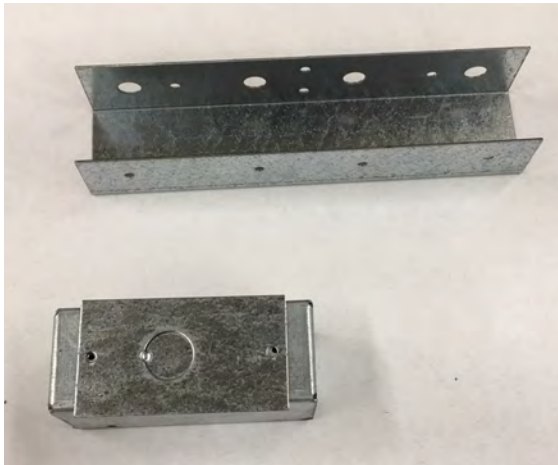
If installing power at base height order one A-170 base bracket.

Order two A-172S single sided Canvas boxes and one 1191-DC

CANVAS WALL furniture electrical parts by EN-TAL Industries.  
**TYPICAL “E” feed for back to back (typically base only)**



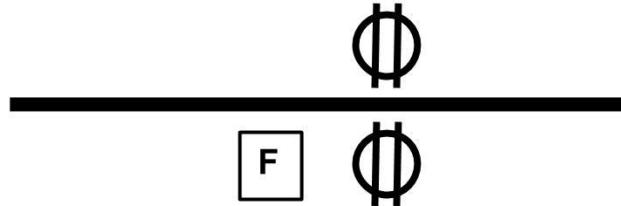
Plan view in feed box back to back panel



In feed at base height order one A-170 base bracket.

Order one A-172DF Canvas feed box

CANVAS WALL furniture electrical parts by EN-TAL Industries.  
**TYPICAL “F” feed with receptacles for back to back (typically base only)**



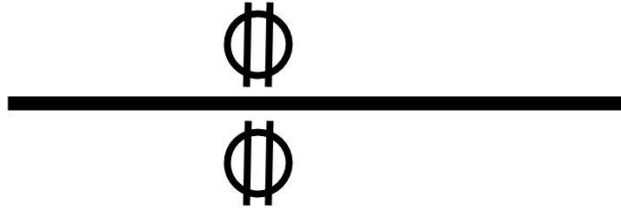
Plan view in feed and receptacle box on a  
back to back panel



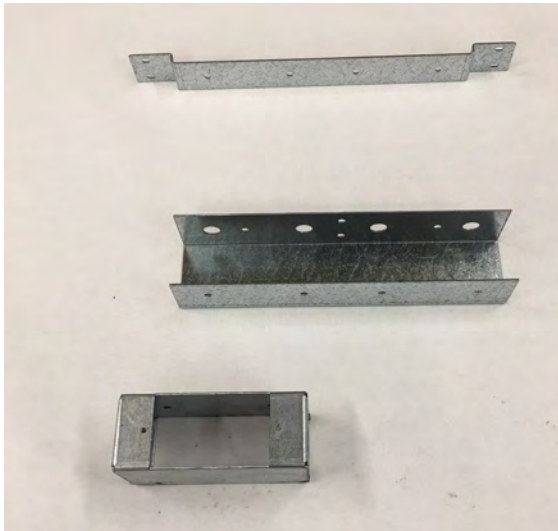
In feed at base height order one A-170 base bracket.

Order one A-172DF Canvas feed box, one A-172D back to  
back Canvas box and one 1191-DC

CANVAS WALL furniture electrical parts by EN-TAL Industries.  
**TYPICAL “G” (base) or TYPICAL “G” (belt) back to back receptacles**



Plan view two duplex receptacles back to back



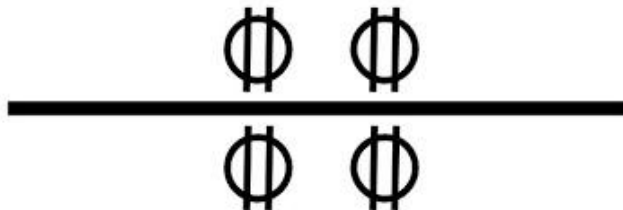
If installing power at belt height order one A-174 belt bracket.

**OR**

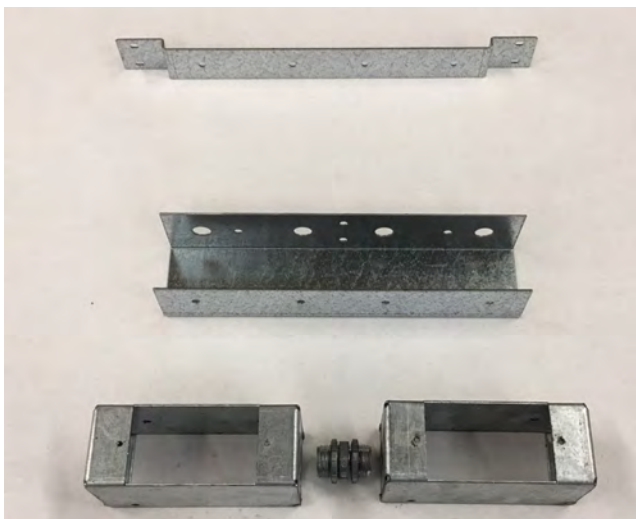
If installing power at base height order one A-170 base bracket.

Order one A-172D back to back Canvas box.

CANVAS WALL furniture electrical parts by EN-TAL Industries.  
**TYPICAL “H” (base) or TYPICAL “H” (belt) back to back receptacles**



Plan view four duplex receptacles back to back



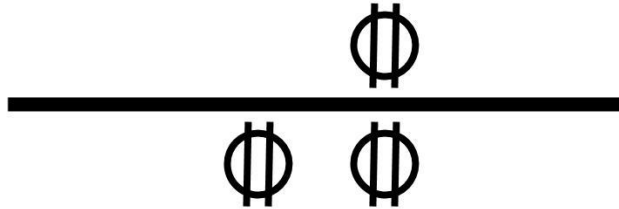
If installing power at belt height order one A-174 belt bracket.

**OR**

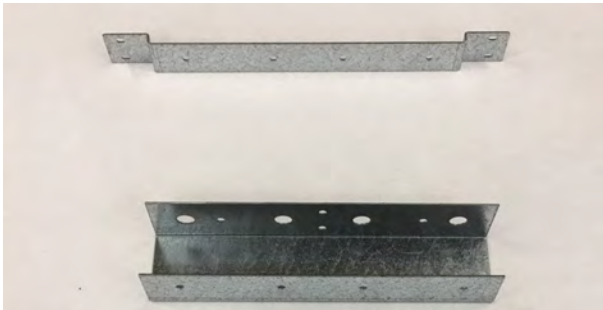
If installing power at base height order one A-170 base bracket.

Order two A-172D back to back Canvas boxes and one 1191-DC

CANVAS WALL furniture electrical parts by EN-TAL Industries.  
**TYPICAL “I” (base) or TYPICAL “I” (belt) back to back receptacles**



Plan view three of four duplex openings back to back



If installing power at belt height order one A-174 belt bracket.

**OR**

If installing power at base height order one A-170 base bracket.



Order two A-172D back to back Canvas boxes, one 1191-DC and one A-173B blank.

After looking at the part numbers and asking the HMI engineers.  
FT171, FT172 and FT17R must have the underlined "B" or the "E" are the same elevation and match my current A-174 brackets. 5" centers.

Sample part numbers that I think all work. FT171.1924ECL, FT172.1924ECL, FT17R.1924ECL,  
FT171.1924BCL, FT172.1924BCL and FT17R.1924BCL

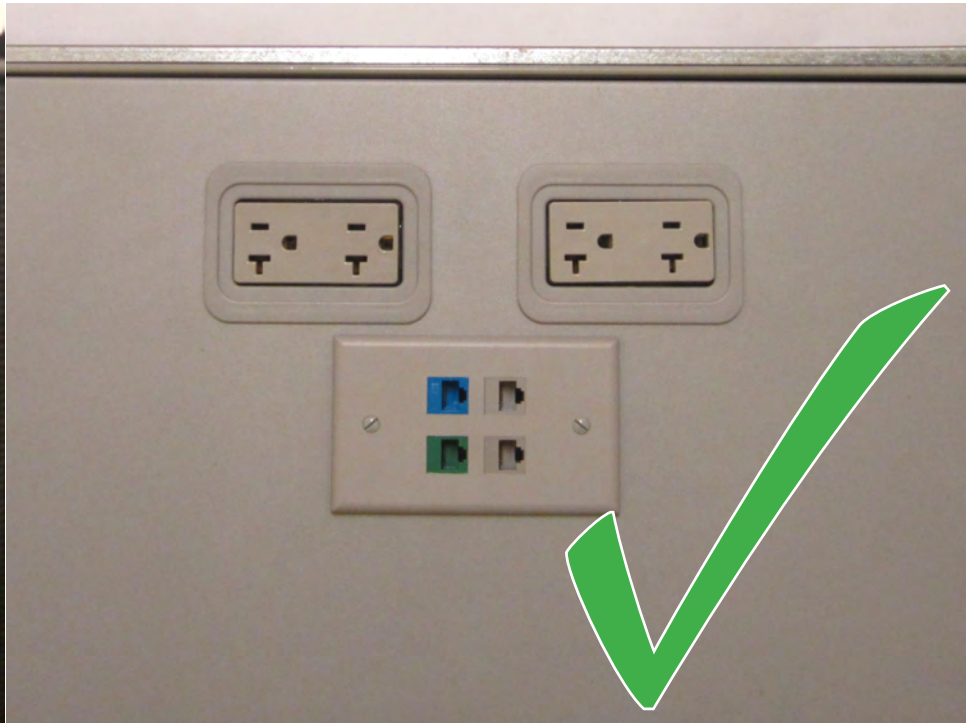
This is a FT171.1924ECL CL mfg 04-07-06 and fits perfect.



A bracket for FT184 with the R suffix is pre-production due to lack of demand.

Tom Sireci  
En-tal Industries  
3691 N. Elston Ave  
Chicago IL 60618  
p-773-463-0440  
f-773-463-7202  
tsireci@en-tal.com

03/02/17





**These fit our in stock A-174 Canvas belt parts according to information provided by HMI engineers.**

**Q:Please confirm all the FT171, FT172 and FT17R must have the underlined "B" or the "E" are the same elevation and match my current brackets. 5" centers.**

**Sample part numbers that I think all work. FT171.1924ECL, FT172.1924ECL, FT17R.1924ECL, FT171.1924BCL, FT172.1924BCL and FT17R.1924BCL This is a FT171.1924ECL CL CL mfg 04-07-06 and fits perfectly.**

**A:You are correct that the B, and E options are for hardwired. They both have the 5" centers and the same elevation. The picture on page 78 does show the wrong outlet location for the highlighted FT157.**

**This PN I have a solution for but have not run any since the demand is low. FT184.24TR Special order only at this time.**

**Do not order the soft or tackable tiles. The depth is a problem. A solution is special options/order only but, possible. This would require a sample with mock ups and long lead times.**