

REQUIRED MATERIALS FOR ETHOSPACE® SYSTEM

(See Components List)

Standard wiring method using Boxes and Flexible Conduit:

The boxes are interconnected with 1/2" extra flexible conduit (See Diagram #1). It is most cost efficient on projects that have a limited number of circuits per station and that do not require constant reconfiguration.

1. Baseline Box:
 - a. E-101S Boxes can accommodate back-to-back outlets; for furniture ordered with the "R" suffix that have Chicago code style base covers.
 - b. E-101H Boxes can accommodate one single sided outlet; for furniture ordered with the "R" suffix that have Chicago code style base covers.
 - c. L101D Boxes can accommodate back-to-back and side-by-side outlets; for furniture ordered with the "E" suffix and have National code style base covers.
2. Beltline Box - requires beltline mounting bracket, sized to the width of the frame:
 - a. L-111 Box can accommodate two outlets total back-to-back.
 - b. L-113 Box can accommodate one outlet.
 - c. L-114 Box can accommodate four outlets total back-to-back and side-by-side.
 - d. L-115 Box can accommodate two outlets total side-by-side.

Alternate wiring method using Boxes, Raceway Connectors and Flexible Conduit:

The base boxes are interconnected with raceway connectors, while the belt height boxes are interconnected with 1/2" extra flexible conduit (See Diagram #2). It is recommended for projects that have a larger number of circuits per station or frequent reconfiguration.

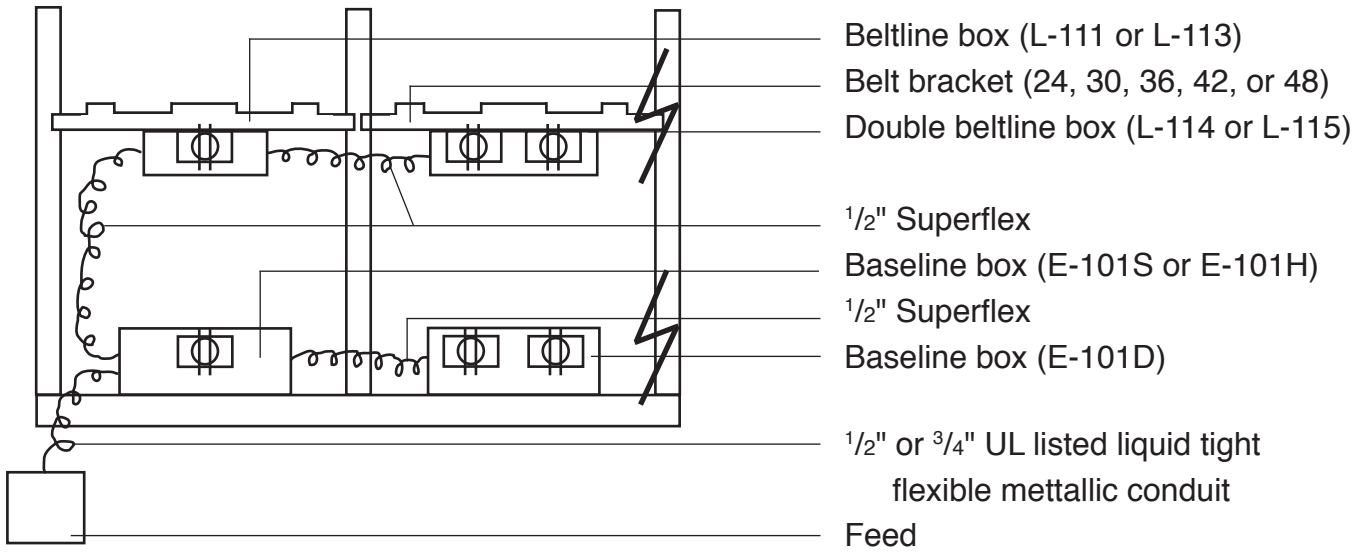
1. Baseline Box:
 - a. Boxes vary in length and must be ordered to correspond with frame width.
 - b. Boxes are needed for any frame with an outlet, or having wire pass through.
 - c. Connectors: Straights, 90°, or 135°; to interconnect base boxes as per layout.
2. Beltline Box - requires beltline mounting bracket, sized to the width of the frame:
 - a. 1/2" extra flexible conduit can be carried across at the belt height or each belt box can be fed from the base box below.
 - b. L-111 Box can accommodate back-to-back outlets.
 - c. L-113 Box can accommodate one outlet.
 - d. L-114 Box can accommodate back-to-back and side-by-side outlets.
 - e. L-115 Box can accommodate side-by-side outlets.

NOTES - Apply to both wiring methods:

- A. Beltline and baseline communications capacity remain undiminished. (Thirtytwo 4 pair cables at baseline, sixteen 4 pair at beltline.)
- B. Wiring, flexible conduit, and outlets, are installed as in any conventional installation.
- C. Recommended wiring is T.H.H.N. stranded.
- D. Either a Baseline or Beltline Receptacle (with trim) is needed for each outlet location.

For additional product information, please contact **En-tal Industries** at (773) 463-0440.
Check with local electrical codes prior to installation.

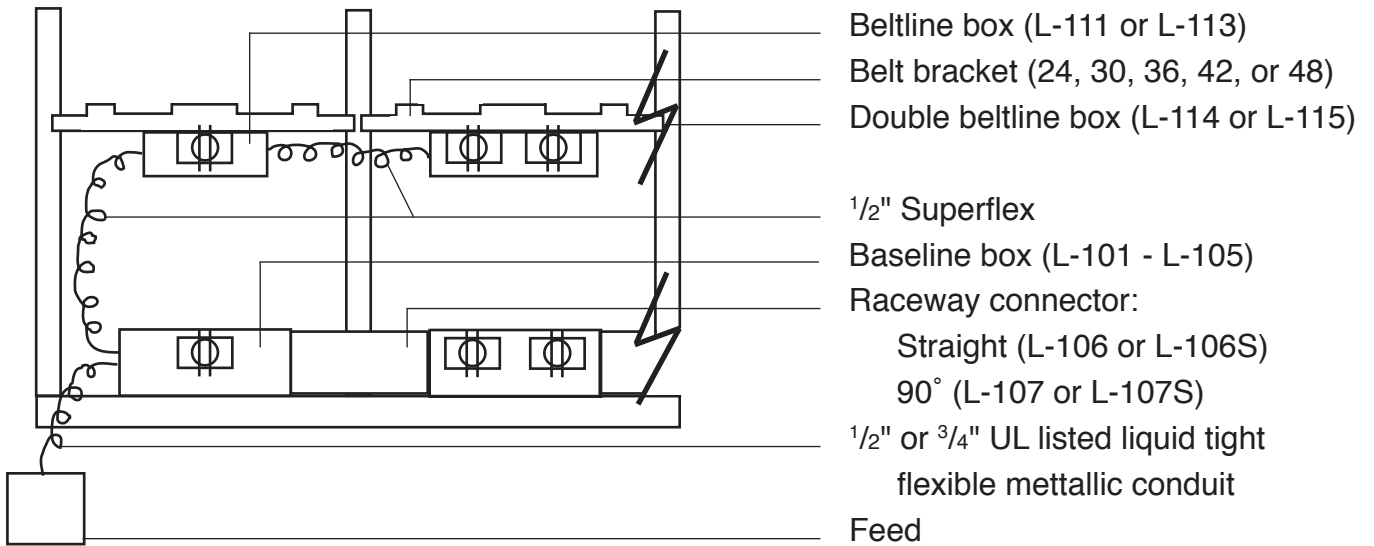
STANDARD INSTALLATION OF ETHOSPACE SYSTEM



Typical Beltline and Baseline Installation

Diagram #1

ALTERNATE INSTALLATION OF ETHOSPACE SYSTEM



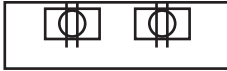


Raceway Beltline and Baseline Installation

Diagram #2





COMPONENTS FOR ALTERNATE BASELINE INSTALLATION
 (For hard wiring Herman Miller Ethospace® Furniture)

ILLUSTRATION	PART#	DESCRIPTION
	L-101 L-102 L-103 L-104 L-105	Base Box: 8" for 24" frame 14" for 30" frame Base Box: 20" for 36" frame 26" for 42" frame 32" for 48" frame
	L-106	Standard Straight Connector For connecting boxes from frame to frame
	L-106S	Extended Straight Connector For connecting straight through intersecting walls at 3-way and 4-way frames
	L-107	90° Connector (Front and top views shown)
	L-107S	90° Connector 1/2 height, with left and right brackets. Used when additional space is needed for data cables (Front and top views shown)
	L-107S	90° Connector 1/2 height, with left and right brackets. Used when additional space is needed for data cables (Front and top views shown)
	L-108	135° Connector (Front and top views shown)
	L-108	135° Connector (Front and top views shown)
	L-109	Blank (Required on most box openings without outlets)
	L-109S	Special Blank (Used only for old style belt boxes)
	L-110	Baseline Box Corner Filler (Required on all corners without connections)

COMPONENTS FOR STANDARD BASELINE INSTALLATION
 (For hard wiring Herman Miller Ethospace® Furniture- continued)

ILLUSTRATION	PART#	DESCRIPTION
	L-101D	Double Base Box for back-to-back outlets and side-by-side outlets. For use with base panels not ordered with the "R" suffix. (Not for use with raceway system. See Alternate hard wiring note on "Required Materials" page.)
	E-101S	Base Box for back-to-back outlets. (Not for use with raceway system. See Alternate hard wiring note on "Required Materials" page.)
	E-101H	Base Box for one single sided outlet. (Not for use with raceway system. See Alternate hard wiring note on "Required Materials" page.)

COMPONENTS FOR BELTLINE INSTALLATION
 (For hard wiring Herman Miller Ethospace® Furniture)

	L-111 (L-111S)	Beltline Box for two outlets total back-to-back (Must be mounted to Beltline Bracket ordered separately)
	L-113* (L-113S)	Single-sided Beltline Box one outlet total (Must be mounted to Beltline Bracket ordered separately)
	L-114	Beltline Box for back-to-back outlets and side-by-side outlets. Requires new style tile. (Must be mounted to Beltline Bracket ordered separately)
	L-115*	Single-sided Beltline Box for two outlets total side-by-side. Requires new style tile. (Must be mounted to Beltline Bracket ordered separately)

*Single Sided Box required for rail or wood tiles installed on the back side of belt outlet openings.

COMPONENTS FOR BELTLINE INSTALLATION

(For hard wiring Herman Miller Ethospace® Furniture)



Eth-24"
Eth-30"
Eth-36"
Eth-40"
Eth-48"

Beltline Brackets for mounting
beltline boxes. Order by furniture
frame size, not actual bracket length.
(Beltline Boxes ordered separately)*

The rest of this page intentionally left blank.

9. Hard-Wire Power

Adding electrical with floor-length face, veneer or laminate tiles

Veneer and Laminate tiles are thicker than standard painted tiles and floor-length tiles have a hat section (stiffener) on the back that causes interference in some applications.

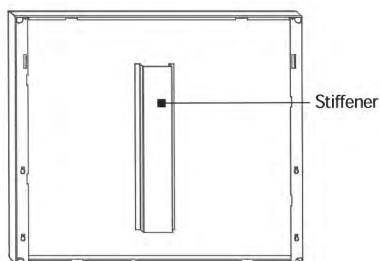
Baseline Power

With metal tiles of all heights, including floor-length tiles, you can use baseline power and H-frames (with hinge plates removed). If tile height is less than the frame height, power can also be placed above floor length tiles.

Beltline Power

E1420 tiles 30" h or greater have a stiffener in the back and cannot use EW399 Beltline Boxes

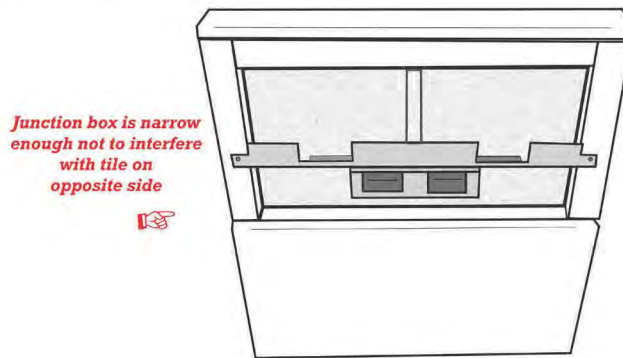
Veneer and laminate tiles are too thick to use EW400 baseline or EW399 Beltline Box assemblies



A 3rd party product is available from En-Tal industries to help with these challenges. These shallow J-boxes are narrow enough to not interfere with the exterior floor-length, veneer, or laminate tile.

Purchase the following items from En-Tal or other 3rd party:
L-115-xx (xx = width of Ethospace frame) and
Beltline Bracket (ETH-24")

*ETL Certified



This information is not accurate
>
You can use this box for beltline or standard base G or J style covers. You also need to remove clips & attach tile to the frame. For H =Hardwire Frames you need to order E-101H or L-101DH Shallow boxes from En-Tal